



## Clapham High Street, Clapham, SW4

2 bedroom flat - penthouse for sale

**£765,000**

Share of Freehold

### Property Details

This exceptional two-bedroom, two-bathroom penthouse offers over 900 sq ft of beautifully designed living space, complete with a stunning full-width private roof terrace. Occupying the top floor of a modern development on Clapham High Street, the apartment is flooded with natural light and boasts an airy, open-plan layout. The spacious open plan reception room features a sleek navy kitchen with white gloss worktops, integrated appliances, and a breakfast bar, leading to a generous lounge and dining area. French doors open onto the expansive terrace, perfect for alfresco dining, relaxing, or entertaining with sweeping views and sunsets. Both double bedrooms have direct terrace access, with the principal benefitting from a modern en-suite. A stylish family bathroom completes the layout. Located moments from Clapham High Street Overground and Northern Line stations, this home is surrounded by excellent shops, restaurants, gyms, and green spaces like Clapham Common. Offered with a share of freehold, this rare penthouse is ideal for professionals, sharers, or those seeking central London outdoor living.

### Features

- Two double bedrooms
- Two bathrooms
- Phenomenal roof terrace spanning the entire width of the property
- Penthouse apartment within a secure modern development
- Over 900 square feet
- Stunning views over the neighbouring roof tops
- Perfectly located set back from Clapham High Street
- A short stroll to Clapham Common
- Share of freehold

Council tax band E    EPC rating C (80)

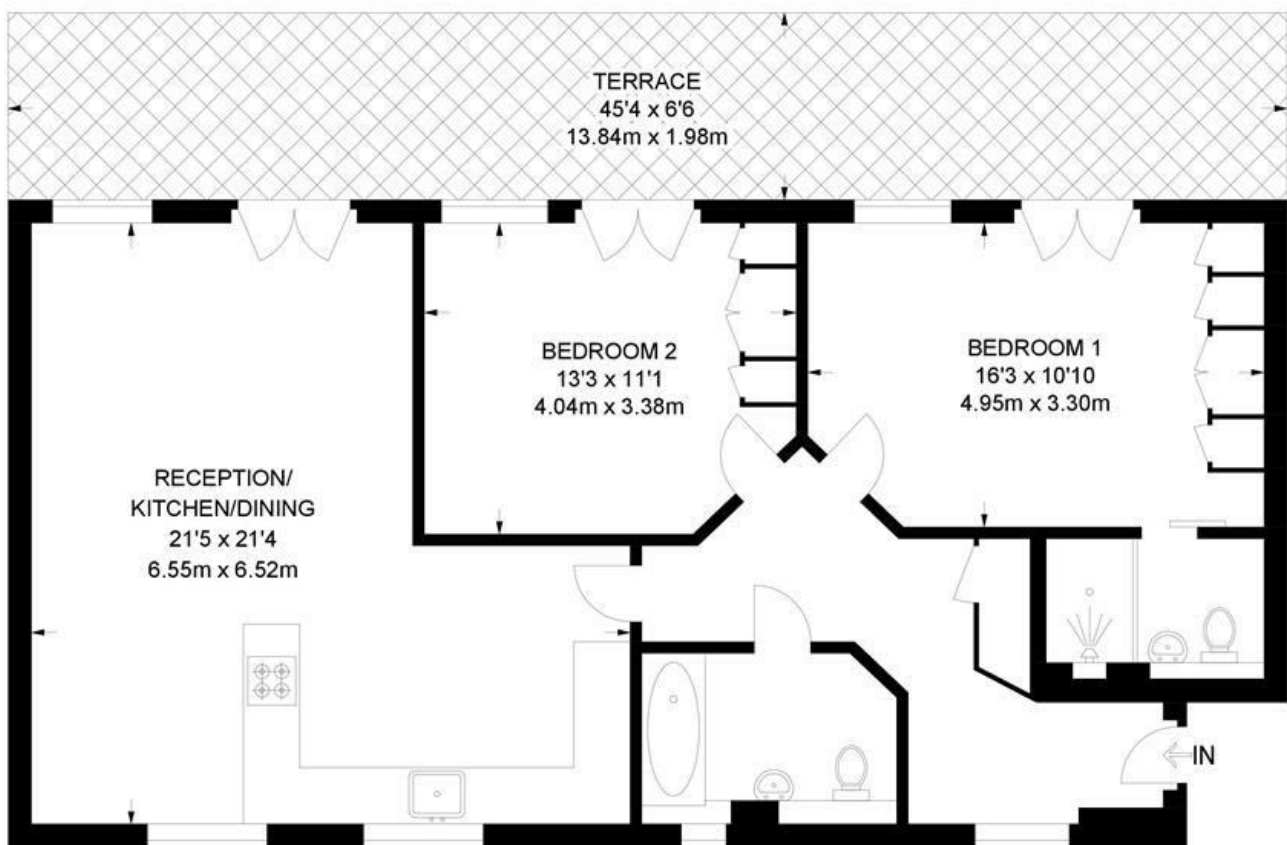




Clapham High Street, Clapham, SW4

**Clapham High Street, SW4**  
**2 Bedroom Flat**

APPROXIMATE GROSS INTERNAL AREA: **922 SQ FT / 85.6 SQ M**



**FOURTH FLOOR**



While we try our very best, floor plans are produced as a guide only and we take no responsibility for the precise accuracy with which any property is represented.

Clapham High Street, Clapham, SW4

